

Airbox Modification Guide for **LLY/LBZ/LMM**

This modification is recommended for maximum performance with the use of Xcelerator tunes 4 and above. This modification significantly improves airflow to the turbo.

DISCLAIMER OF LIABILITY

This is a performance modification which increases airflow above and beyond factory specifications. As a result, more horsepower creates more stress on the drivetrain components, which could result in drivetrain failure. This modification is intended for off-road use only. Use at your own risk. This agreement sets forth the terms and conditions for the use of this modification. The installation of this modification indicates that the Buyer has read and understands this agreement and accepts the terms and conditions. Pacific Performance Engineering Inc., its distributors, employees, and dealers (the "Seller") shall not be responsible for the modification's proper use and service. The buyer hereby waives all liability claims. The Buyer hereby acknowledges no reliance on the Sellers skill or judgment to select or furnish goods suitable for any particular purpose and that there are no liabilities which extend beyond the description on the face hereof, and the Buyer hereby waives all remedies or liabilities expressed or implied, arising by law or otherwise (including without any obligation of the Seller with respect to fitness, merchantability and consequential damages), or whether or not occasioned by the Seller's negligence.

The Seller disclaims any warranty and expressly disclaims any liability for personal injury or damages. The Buyer acknowledges and agrees that the disclaimer of any liability for personal injury is a material term for this agreement and the Buyer agrees to indemnify the Seller and to hold the Seller harmless from any claim related to the item of equipment purchased. Under no circumstances will the Seller be liable for any damages or expenses by reason of use or sale of any such equipment. The Seller assumes no liability regarding the improper installation or misapplication of its products. It is the installer's responsibility to check for proper installation and if in doubt contact the manufacturer. The Buyer is solely responsible for all warranty issues from the manufacturer.

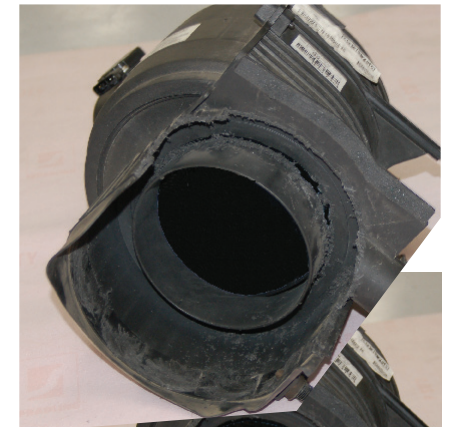
LIMITATION OF WARRANTY

Since this is a modification, and not a physical product, there is no warranty associated with this modification. The modification is done at your own risk.

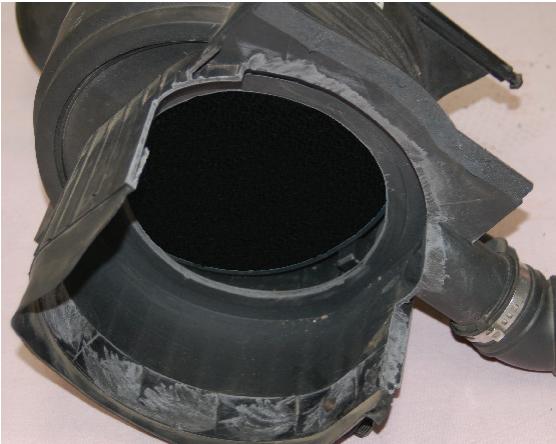
1. Disconnect the airflow sensor and remove airbox from the front passenger side by removing air tube and pulling upward on airbox. It will release from 2 pressure clips on its bottom.
2. Pry off the plastic shield behind the head lamp to increase cold air flow to the airbox by releasing 3 clips.
3. Remove the air filter and cut the air directing vanes.



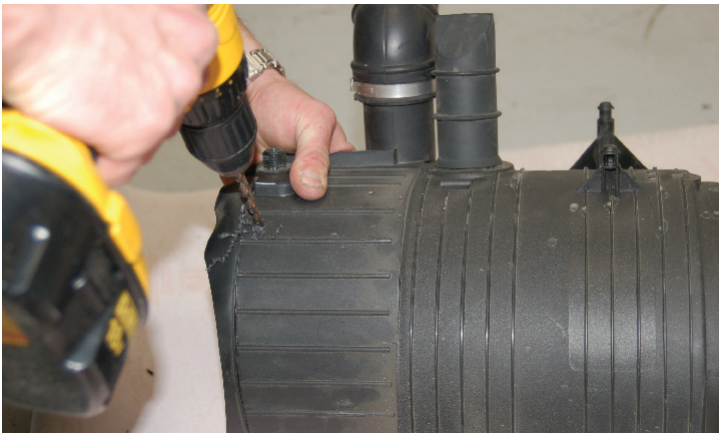
4. Cut the whole fan shape loose and remove.
5. Cut off half the outer ring as shown below.
6. Cut the inner ring and remove.



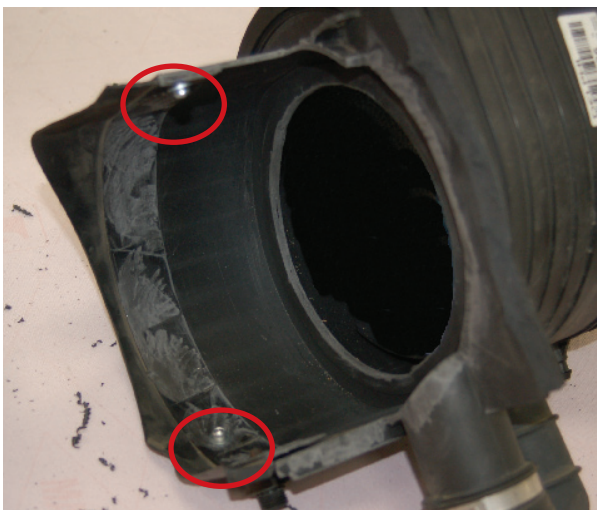
7. Sand down any rough edges where cuts were made to smooth out the entrance to the airbox.



8. Drill 2 holes and install 2 fasteners or rivets in the airbox to secure the loose plastic/rubber seal.



9. The seal is riveted to the airbox into place.



The original Donaldson/GM filter will flow plenty of air for even the largest of Xcelerator and or turbo upgrades. There is no need for any aftermarket air intake system once this modification is complete.

10. Reinstall the airbox in the vehicle to complete installation.